

# Welcome

to Harvest Home Primary

## OUTSIDE SCHOOL HOURS CARE

Our Outside School Hours Care (OSHC) program at Harvest Home Primary School complements your child's school experience with engaging activities and opportunities to socialise with peers.

### PROGRAM DETAILS

We tailor our OSHC program to support each child's individual interests and ideas. We perform a variety of planned and spontaneous activities that help children develop life skills and enhance their autonomy. Children are actively encouraged to engage with their peers from all year levels.

Some of our activities include:

- Active play outdoors
- Board games and puzzles
- Construction and engineering
- Cooking and baking
- Music, singing and dancing
- Dramatic and imaginative play
- Homework items and reading
- Sustainability initiatives

### HOURS, FEES AND CHILD CARE SUBSIDY

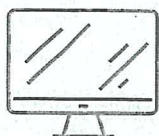
SESSION TYPE	HOURS	SESSION FEE	FEE AFTER MAX CCS*
<b>Before School Care</b> (permanent booking)	6:30am - 8:45am	\$28.80	\$4.32
<b>Before School Care</b> (casual booking)		\$33.80	\$5.07
<b>After School Care</b> (permanent booking)	3:10pm - 6:30pm	\$34.70	\$5.21
<b>After School Care</b> (casual booking)		\$39.70	\$5.96
<b>Pupil Free Day</b> (numbers pending)	6:30am - 6:30pm	\$92.30	\$13.85
<b>School Holiday Program*</b> (in house activity)	6:30am - 6:30pm	\$92.30	\$13.85

\*MAX CSS is the out of pocket fee paid by families who qualify for the maximum Child Care Subsidy percentage (90%). The fees above are estimated with the 5% withheld by Services Australia to reduce the chances of an overpayment.

\*Additional fees may apply for incursion and excursion activities held during the School Holiday Program where applicable.

These fees apply from Monday 7 August 2023

### Quick step-by-step guide to enrol



STEP 1 – REGISTER

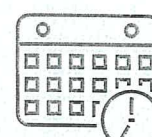
[www.childrensprogramms.ymca.org.au](http://www.childrensprogramms.ymca.org.au)



ADD CONTACT  
AND CHILD



BILLING AND  
DECLARATIONS



MAKE A  
BOOKING

### CONTACT US

E: [harvesthome@ymca.org.au](mailto:harvesthome@ymca.org.au)

P: 0417 661 126

W: [childrensprogramms.ymca.org.au](http://childrensprogramms.ymca.org.au)

