



Wurun Community Newsletter

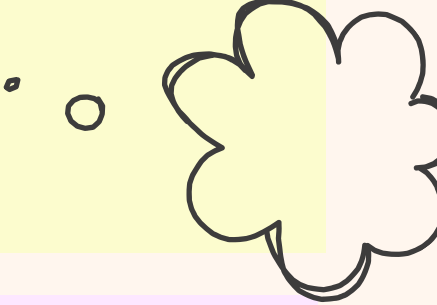


Hello Year 1 Families,

Welcome back to another exciting and eventful term in Year 1 at Harvest Home Primary School. We have had a fantastic start to term 3 and we are looking forward to many exciting things to come! This term the students have continued to work on their learning goals and are enjoying new challenges in all areas of their learning.

The following pages will share our focuses for the term in different learning areas. If you have any questions throughout the term, please contact any of the Wurun community teachers.

Kind Regards,
Amy, David and Lourdes



ID AMY

IE DAVID

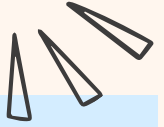
IF LOURDES



HARVEST HOME
PRIMARY SCHOOL

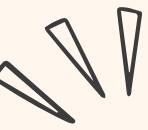
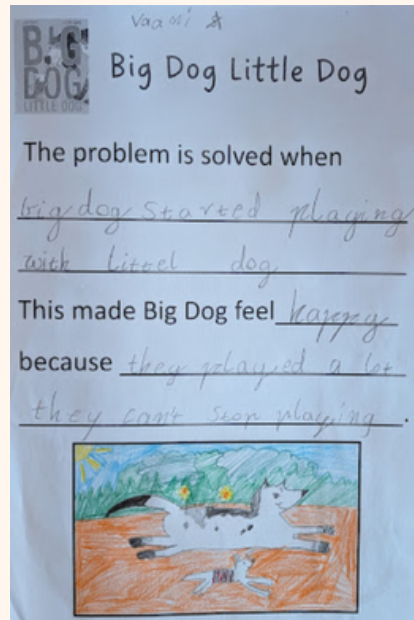
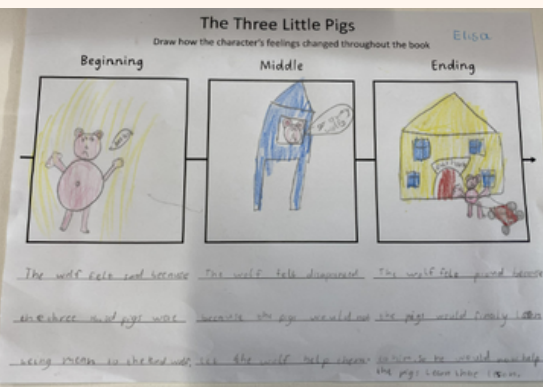


READING



This term, students will be learning to infer the traits and feelings of a character in a text by:

- Making predictions based on knowledge of characters
- Discussing how authors use language to describe character traits
- Talking about character's feelings, attributes, motives or actions through text and pictures
- Recognising how a character's feelings have changed throughout the text
- Talking about what has caused a character to feel a certain way
- Discussing how characters could have behaved differently
- Showing understanding of characters and their traits using evidence from text
- Applying the skills to their own texts.



Levelled Literacy Intervention (LLI)



Throughout Term 3 and Term 4, Fraser will be working with a selection of students in the LLI (Levelled Literacy Intervention) program. This program is used to build reading skills such as comprehension, fluency, and vocabulary.



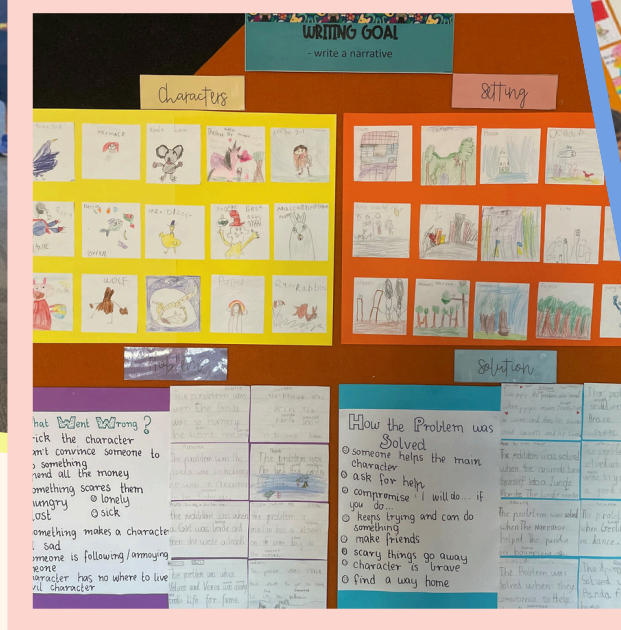
WRITING

This term we are focusing on writing narratives. We will begin by exploring traditional fairy tales to further students' knowledge of the features of a narrative. Our aim is for students to create and publish their own narrative.

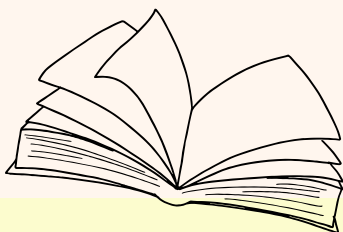
Students will be following the writing process of planning, drafting, editing and publishing their narratives, which will include characters, settings, a problem and solution.

Within their groups, students will be continuing to work on the following skills:

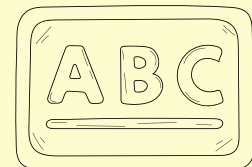
- Using consistent boundary punctuation such as capital letters and full stops.
- Adding detail to their writing using adjectives and adverbs.
- Rereading and editing their work for grammar and spelling.
- Using the dotted thirds to help with letter formation.
- Using their phonics and OWL word knowledge to spell tricky words.



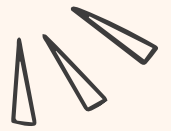
**Writing Experience
Minute to Win it!**



PHONICS

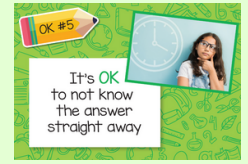
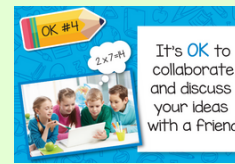
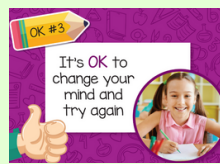
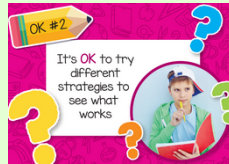


Each week students have sessions dedicated to Phonics based on the needs of the students. Within the Phonics sessions students develop their phonological and phonemic awareness. Jolly Phonics is used within the communities to identify, segment and blend sounds. As students continue to develop their knowledge of letter sounds, they are introduced to alternative spellings for some common sounds, e.g. the 'ay' in 'play' making /ai/.



NUMERACY

We are going to be looking at a range of numeracy topics in Term 3. Across all areas of numeracy, students are encouraged to display a growth mindset. Students will continue to participate in numeracy challenges which will encourage them to use a range of problem solving skills. Students will continue to be reminded of the 5 OK's.



Within planned activities, students will be focusing on the following skills:

PLACE VALUE

- Recognise, make, read, write and order numbers to at least 100
- Locate these numbers on a number line

SHAPE

- Describe 2D and 3D shapes

TIME

- Tell time to the half hour
- Explain time durations



PERSONAL AND SOCIAL LEARNING



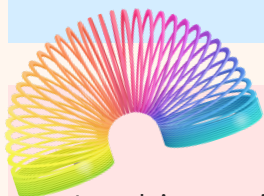
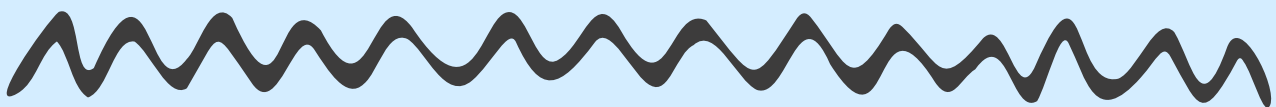
This term, Year 1 will explore Topic 8 of the Resilience, Rights and Respectful Relationships learning resource. The main themes explored in Topic 8 – Positive Gender Relations are:

- What is fair / unfair play? Why do games work well when they are played fairly?
- Being inclusive and gender friendly – boys / girls should not be excluded from particular games due to their gender
- What does unsafe behaviour look like?
- The opposite of unsafe is respectful behaviour. How does it feel when people play respectfully?

This unit is research-based and developed by experts in education and wellbeing, aligned with the Victorian Curriculum. All lessons consider age-appropriate content and language. You can find out more by following this link:

<https://www.vic.gov.au/respectful-relationships>

If you have any questions related to your child's participation, please get in touch with their homegroup teacher.



Inquiry

In this topic, students will investigate how toys have changed overtime. They will explore different designs and what materials the toys are made from. They will be looking at the features and uses of different toys, through exploration in class and on their excursion at the Museum. Students will develop an idea for a toy, thinking about it's function, how it will work and what materials it will be made from. They will share and communicate their design ideas for their designed solutions, using modelling and simple drawings.



Year One Home Learning

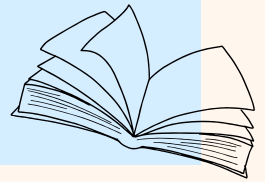
In Year 1, Home Learning will continue to consist of Take Home reading, Tricky OWL word lists for students to practice reading and a number chart for students to practice their counting goal.

It is recommended that students in Year 1 participate in a minimum of 20 minutes of home learning per day with a family member. Students are to read either their take home book or a book on Reading Eggs or Sunshine Online on a daily basis. Please record the book read each night in their yellow home reader book. After reading, parents are encouraged to discuss the meaning of the books and give your child a deeper, richer understanding of what has been read.

Just a reminder you have access to the following subscriptions. In your child's yellow home reader book you will find the login details to the following websites:



Reading Eggs- www.readingeggs.com.au
Sunshine Online- <https://www.sunshineonline.com.au>
Mathletics- www.mathletics.com.au



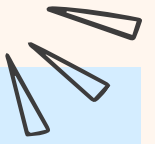
Please ensure you are regularly checking your child's current counting goal.



**Our Writing
on Display
in the
Office**



Important Dates



TOGETHER ON FRIDAYS

PREP - 3 Friday 30th August
WHOLE SCHOOL Friday 23rd August / 14th Sept



SWIMMING COMMENCES
Monday 19th August

BOOK WEEK DRESS UP
Wednesday 21st August

FATHER'S DAY STALL
Wednesday 28th August

DONUTS WITH DAD MORNING
Friday 30th August

PARENT / TEACHER INTERVIEWS
Wednesday 11th September

TERM 3 FAMILY SHOWCASE
Wednesday 18th September

YEAR 1 EXPERIENCE NIGHT
Thursday 19th September

LAST DAY EARLY FINISH 2:30PM
Friday 20th September

All of the above important events will be communicated to families via Compass with further information.



SPECIALIST TIMETABLE

TERM 3

TUESDAY

1D: MINDFULNESS
1E: VISUAL ART
1F: MINDFULNESS
(SESSION 3)

1D: PE

1E: STEAM

1F: PE
(SESSION 4)

WEDNESDAY

1D: SCIENCE
1E: PE
1F: VISUAL ART
(SESSION 5)

FRIDAY

1D: VISUAL ART
1E: SCIENCE
1F: STEAM
(SESSION 1)

1D: STEAM
1E: MINDFULNESS
1F: SCIENCE
(SESSION 2)

REMINDERS

Fruit break: Please ensure your child has at least 1 fruit or vegetable in their lunch box to eat during fruit eating time.

ABSENCES

If for any reason your child is absent from school, you can explain the absence on Compass or contact the school office on 8468 9000.

Museum Excursion

This term we had an excursion to the Museum, where we got to ...



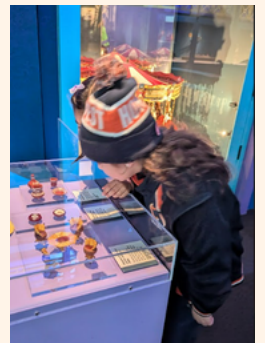
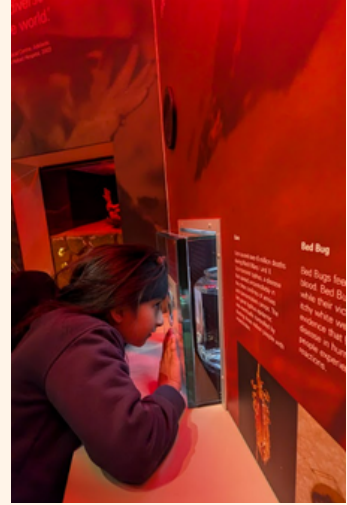
Museum Excursion

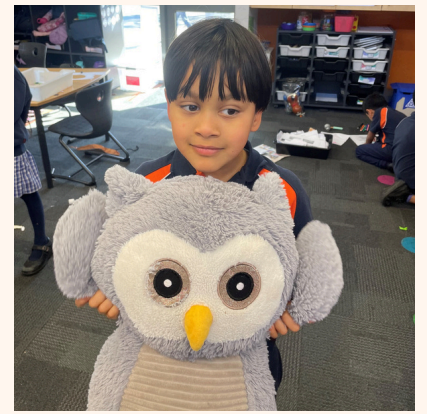
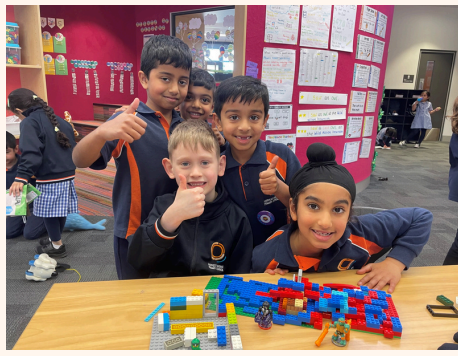
This term we had an excursion to the Museum, where we got to ...



Museum Excursion

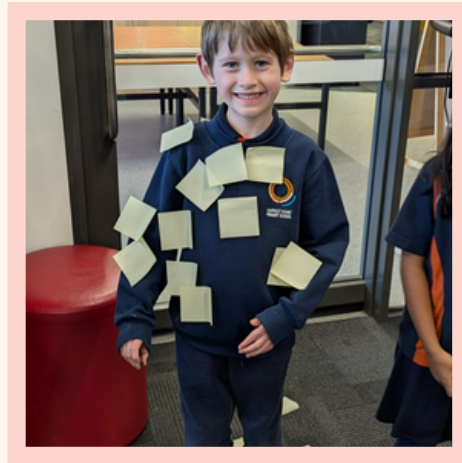
This term we had an excursion to the Museum, where we got to ...





We are having so much fun in
YEAR ONE!





We are having so much fun in YEAR ONE!

