

Matong Community Newsletter

Dear families,

Our Year 5 students have commenced Term 2 in a very calm and focused manner. Their enthusiasm and passion towards topics in Literacy, Numeracy and CBL has been outstanding.

We look forward to all the learning and celebrations ahead this term and thank you for all your ongoing support.

Key Dates

18th May: District Cross Country

24th May: Open Morning

27th May: Education Week Dress Up Day - When I Grow Up

1st June: Nude Food Day

9th June: Years 4 - 6 Athletics Carnival

10th June: Pupil Free Day

13th June: Queens Birthday (Public Holiday)

15th June: Nude Food Day

20th - 22nd June: Camp

23rd June: Academic Reports Posted

24th June: Last Day of Term 2 (Early Finish 2:30pm)



HARVEST HOME
PRIMARY SCHOOL

Congratulations to all
the Year 5 students who
participated in NAPLAN
this week.

We are so proud of what
they have achieved.



Reading

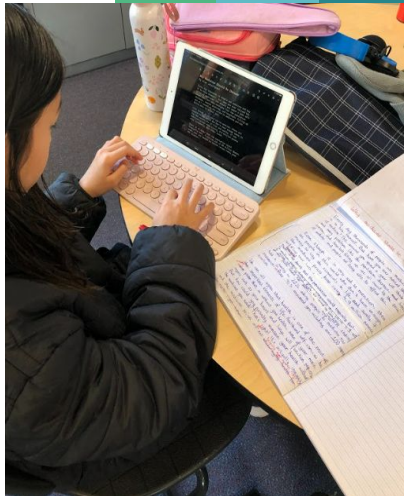
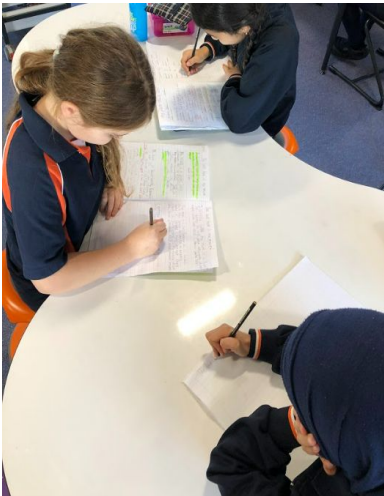
Reading during term 2 has begun with a focus on identifying a range of strategies authors use to engage readers, within both fiction and nonfiction texts. Some examples we have explored include figurative language such as metaphors and hyperbole and the way authors intentionally use language to keep their audience engaged.

Within nonfiction texts we have investigated how text structure and features interest readers. Students have continued to explore new texts during independent reading time where they can put into practice the reading skills and strategies learnt during the whole class focus.



Writing

This term we are focusing on persuasive writing. Students will work on implementing persuasive devices such as expert appeal and inclusive and emotive language in their written texts and advertisements. In addition to this, students will carefully consider both sides of a persuasive argument when writing and presenting debates and discussions.



Numeracy

This term in Numeracy we will be focusing on the following topics:

Weeks 3 - 6: Multiplication and Division

During these weeks students will focus on solving one and two digit multiplication problem using mental and written strategies. We will also solve division problems by one number, including remainders and estimate the reasonableness of answers and approximate answers by rounding.

Weeks 7 and 8: Time

Students will compare and convert 12 and 24 hour time.

Week 9: Revision

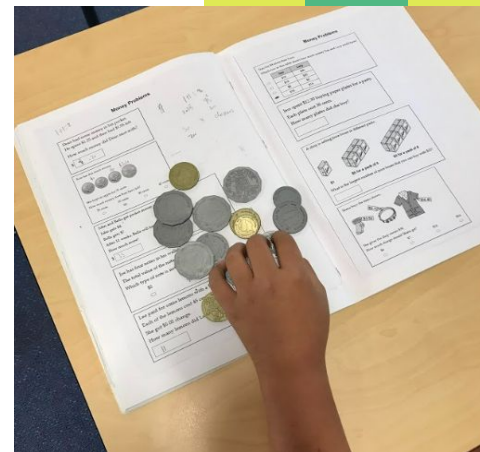
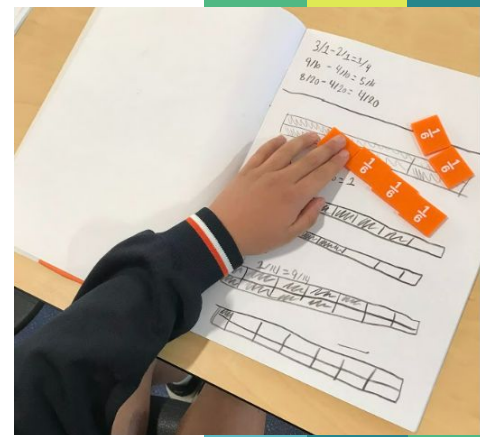
This week will be all about celebrating what the students have achieved as well as revising all that we have learnt during the term.

At Home Learning Module

Many students have already begun their at home learning module on the topic of Location. A reminder this module is due Friday the 10th of June via Google Classroom. A Location Master Certificate will be provided to students once completed.

Mathletics Set Tasks

To complement the Numeracy topics above, students will be assigned tasks to complete on Mathletics throughout the term.



Upcoming Camp

We are so excited for our upcoming camp at Camp Manyung in Mount Eliza. This camp will have plenty of amazing activities including the Giant Swing, TreeTop Challenge and Archery.

We can't wait to see our students challenge themselves and develop new friendships with their peers.

More information regarding camp has been, and will continue to be communicated via Compass to those families who have a child attending camp.



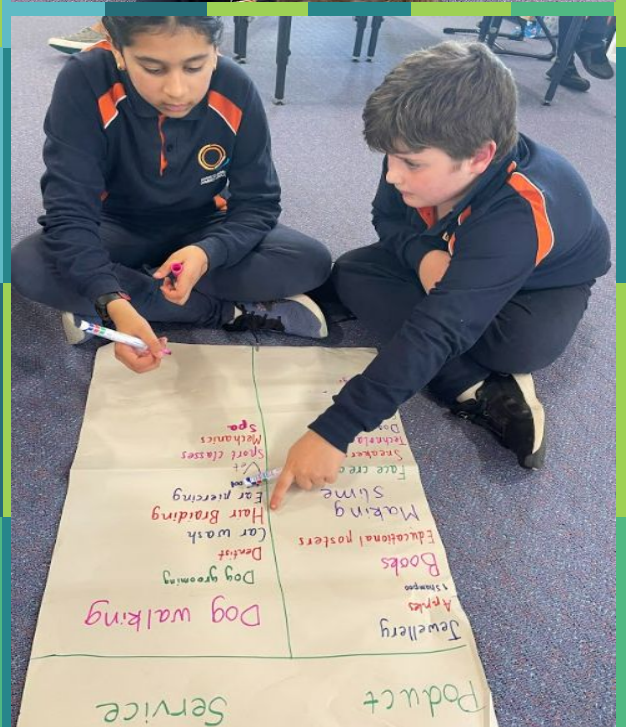
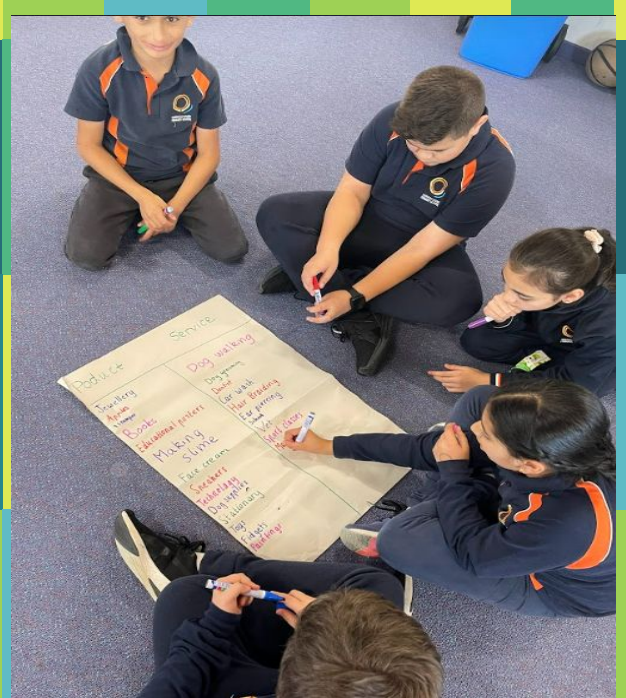
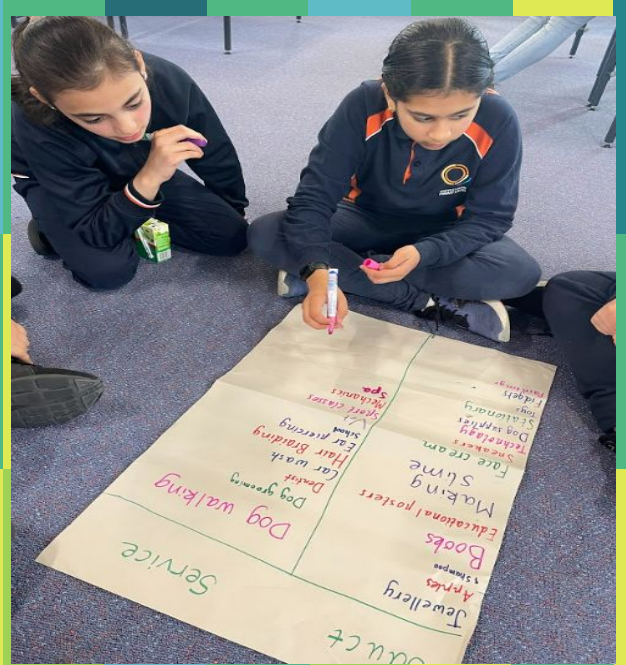
Challenge Based Learning (CBL)

This term, Year 5 students will be participating in a Business and Economics unit during our weekly CBL sessions.

As part of this unit, students will decide on a product or service that they are passionate about and gather information on it.

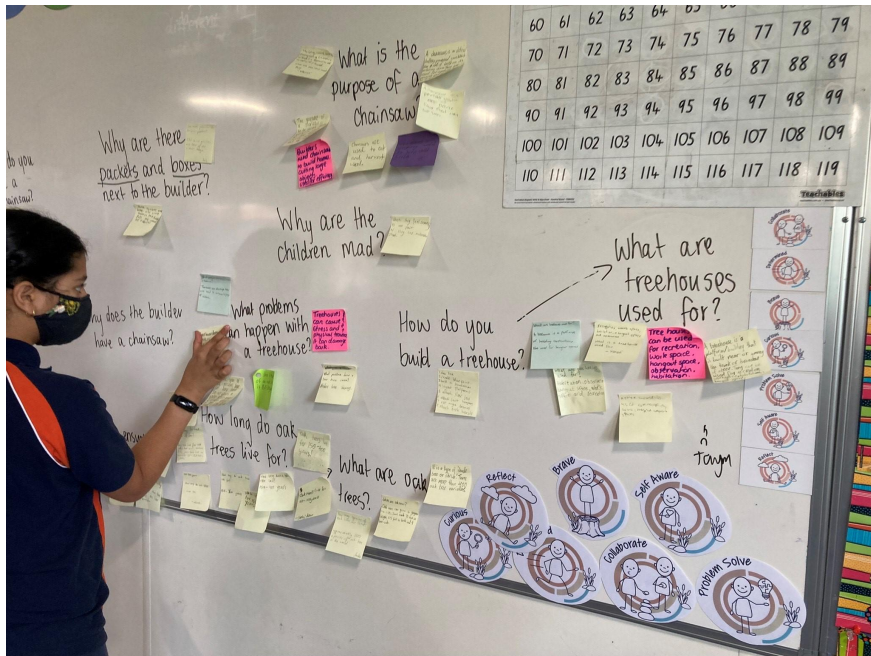
They will then carefully consider and select a target audience, while completing a range of tasks that involving budgeting, seeking and consumer feedback and advertising.

We are very excited to showcase student ideas during a Market Day, which will allow students to present all their hard work and ideas to their peers and teachers.



Personal and Social

Throughout this term, students will be exploring different ways to manage a range of emotions and responses to situations. They will also discuss and explore useful strategies and available resources.



Learner Dispositions

At Harvest Home Primary School, Learner Dispositions are utilised in every aspect of learning. They encourage students to develop positive learning habits and behaviours. Our school dispositions are: Curious, Determined, Brave, Reflect, Collaboration, Self-Aware and Problem-Solve.

Recently, the Matong Community has specifically been focusing on the learning disposition of 'Curious'. During learning, the students have been encouraged to ask questions and express their wonderings about different topics. This has allowed students to think deeply about topics and seek answers to their wonderings.



Specialist Timetable

Homegroup	Monday Session 5 & 6	Thursday Session 5 & 6
5A	Science with Monique STEAM with Joe	Visual Arts with Melissa P.E with Anthony
5B	P.E with Jason STEAM with Hugh	Science with Amy Spanish with Julia
5C	STEAM with Hugh Science with Amy	Spanish with Julia P.E with Jason
5D	Visual Arts with Melissa Science with Monique	P.E with Jason STEAM with Hugh
5E	Spanish with Julia P.E with Jason	STEAM with Hugh Science with Amy

Tutor Learning Initiative

This Term, our Tutor Learning Intervention Coaches, Sheena and Josephine have continued to support students in the areas of Literacy and Numeracy. They work with students in small targeted teaching groups on a daily basis, where students are explicitly exposed to a range of skills and strategies, while being provide with opportunities to further extend and consolidate their knowledge and understanding.



Reminders

iPads

As part of our BYOD program, all students in Years 3-6 are asked to bring their own device to school to support their learning.

Mobile Phones

Teachers will store mobile phone devices safely between 8:50am and 3:10pm.

Reading satchels and diaries

To support our home learning program students are required to bring their reading satchels and orange diaries to school on a daily basis.

Camp Medical Forms

Camp medical forms have now been sent home. These are due back on Friday the 20th of May.

If you have any queries, please contact your child's homegroup teacher.

Kind Regards,

Stephanie, Andrew, Jennifer,
Rebecca, Ashleigh, Mikaela and
Dilhani (Education Support)

Year 5 Community Teachers

